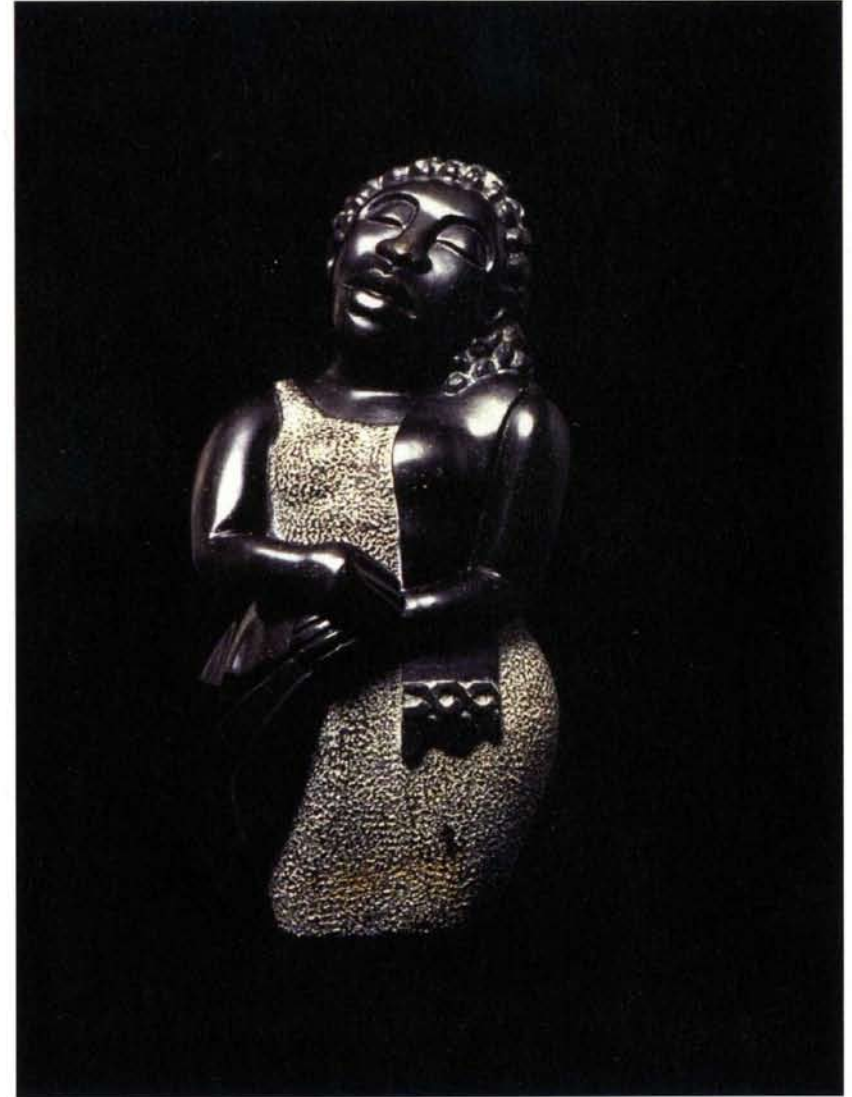


**Amana Brembry Johnson** first exhibited at the Thelma Harris Gallery in 1994 after an extended sculpture residency in Africa. There she worked with some of Zimbabwe's most celebrated master sculptors. Since then Amana has continued to advance her range of sculptural expression to include monumental works in stone and contemporary materials, site-specific installation, and public art commissions locally and throughout the United States. She is currently working on a commission for the City of San Francisco to honor and memorialize the historic presence of African American communities in Bayview Hunter's Point.

A decade of prolific, stylistic development in stone carving brought forth the sensuous line, richness in textural variation, and refinement of facial features that have become known as Johnson's signature. This current body of work is punctuated with contemporary influences attributable to Amana's graduate work at the Maryland Institute College of Art where she received the Masters of Arts degree in Sculpture.

This Exhibition entitled *Internal Climates*, is comprised of stone and bronze works that represent the point where Johnson's classical stylizations mark her signature. The new and unique body of ceramic sculpture presented here integrates contemporary, conceptual design techniques into her well-defined sculptural architecture. It is with pride and passion that the Thelma Harris Gallery once again presents to you the work of this eclectic, multi-talented artist.



*Internal Climates*